

EVACUATION DIAGRAM - BASEMENT

**565 HAY STREET
PERTH, 6000**

EMERGENCY INFORMATION

ON HEARING THE ALERT TONE

(Beep.....Beep.....Beep...)

- Be aware that a possible emergency situation exists.
- Check for signs of fire and smoke in your area.
- Move to the emergency exit on your floor and await further instructions, otherwise, standby.

ON HEARING EVACUATION TONE

(Whoop, Whoop, Whoop)

- Cease all activities and move to the nearest safe exit.
- When directed, evacuate to the assembly area.
- Exit in single file on the hand rail side of stairs.
- No talking in the fire stairs other than the Fire Wardens instructions.
- No inappropriate items to be taken in stairs eg NO DRINKS.
- DO NOT USE LIFTS



ASSEMBLY AREA

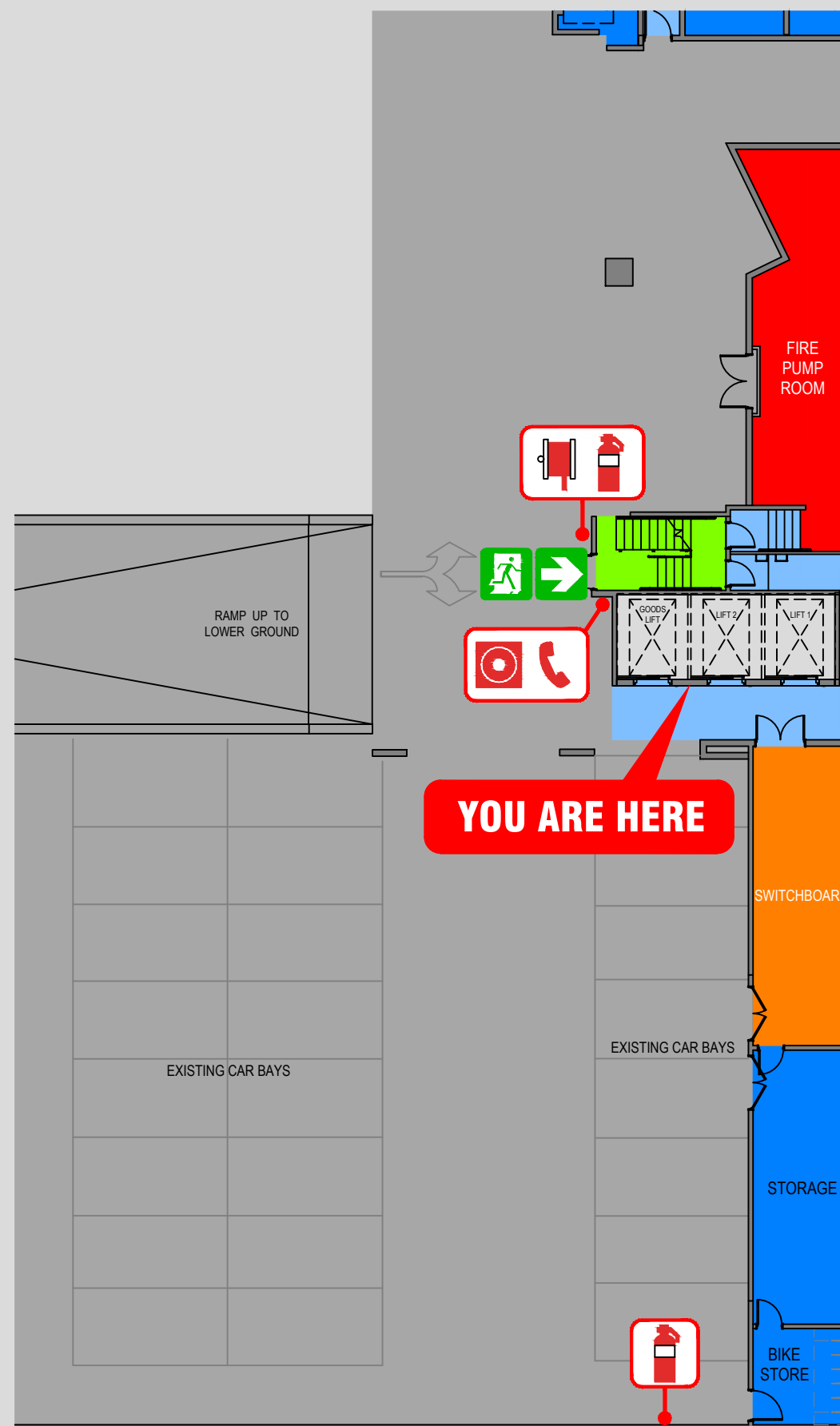
Assemble at Assembly Area 1:

On footpath along Cathedral Avenue

- If directed to move to Assembly Area 2, cross roads, watch the traffic and take care.
- Report any missing persons to the Fire Brigade or Warden.

DIAL - 000 EMERGENCY SERVICES

- | | |
|--|---|
|  Fire Hose Reel |  Manual Call Point |
|  Dry Chemical Powder Extinguisher |  Warden Intercom Point |
|  Path of travel |  Muster Location |
|  Emergency Exit | |



EVACUATION DIAGRAM - LOWER GROUND

565 HAY STREET
PERTH, 6000

EMERGENCY INFORMATION

ON HEARING THE ALERT TONE

(Beep.....Beep.....Beep...)

- Be aware that a possible emergency situation exists.
- Check for signs of fire and smoke in your area.
- Move to the emergency exit on your floor and await further instructions, otherwise, standby.

ON HEARING EVACUATION TONE

(Whoop, Whoop, Whoop)

- Cease all activities and move to the nearest safe exit.
- When directed, evacuate to the assembly area.
- Exit in single file on the hand rail side of stairs.
- No talking in the fire stairs other than the Fire Wardens instructions.
- No inappropriate items to be taken in stairs eg NO DRINKS.
- DO NOT USE LIFTS

ASSEMBLY AREA

Assemble at Assembly Area 1:

On footpath along Cathedral Avenue

- If directed to move to Assembly Area 2, cross roads, watch the traffic and take care.
- Report any missing persons to the Fire Brigade or Warden.

DIAL - 000 EMERGENCY SERVICES



Fire Hose Reel



Manual Call Point



Path of travel



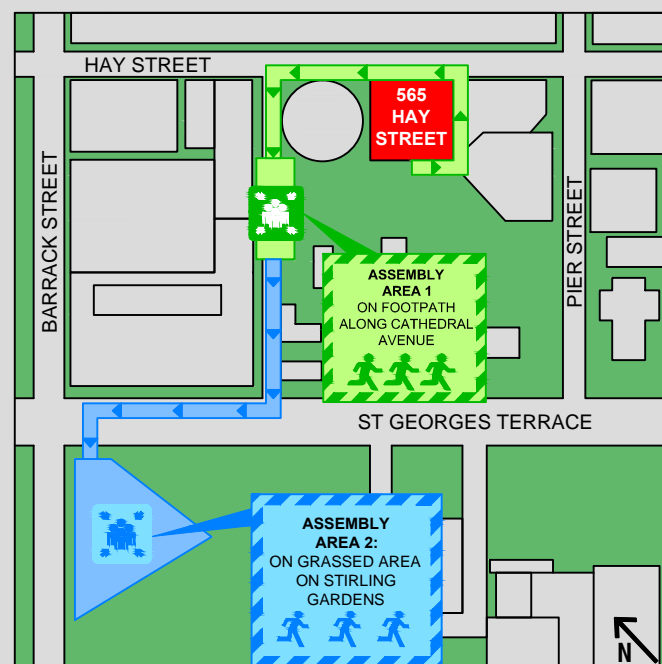
Warden Intercom Point



Emergency Exit



Muster Location



EVACUATION DIAGRAM - GROUND

565 HAY STREET
PERTH, 6000

EMERGENCY INFORMATION

ON HEARING THE ALERT TONE

(Beep.....Beep.....Beep...)

- Be aware that a possible emergency situation exists.
- Check for signs of fire and smoke in your area.
- Move to the emergency exit on your floor and await further instructions, otherwise, standby.

ON HEARING EVACUATION TONE

(Whoop, Whoop, Whoop)

- Cease all activities and move to the nearest safe exit.
- When directed, evacuate to the assembly area.
- Exit in single file on the hand rail side of stairs.
- No talking in the fire stairs other than the Fire Wardens instructions.
- No inappropriate items to be taken in stairs eg NO DRINKS.
- DO NOT USE LIFTS










ASSEMBLY AREA

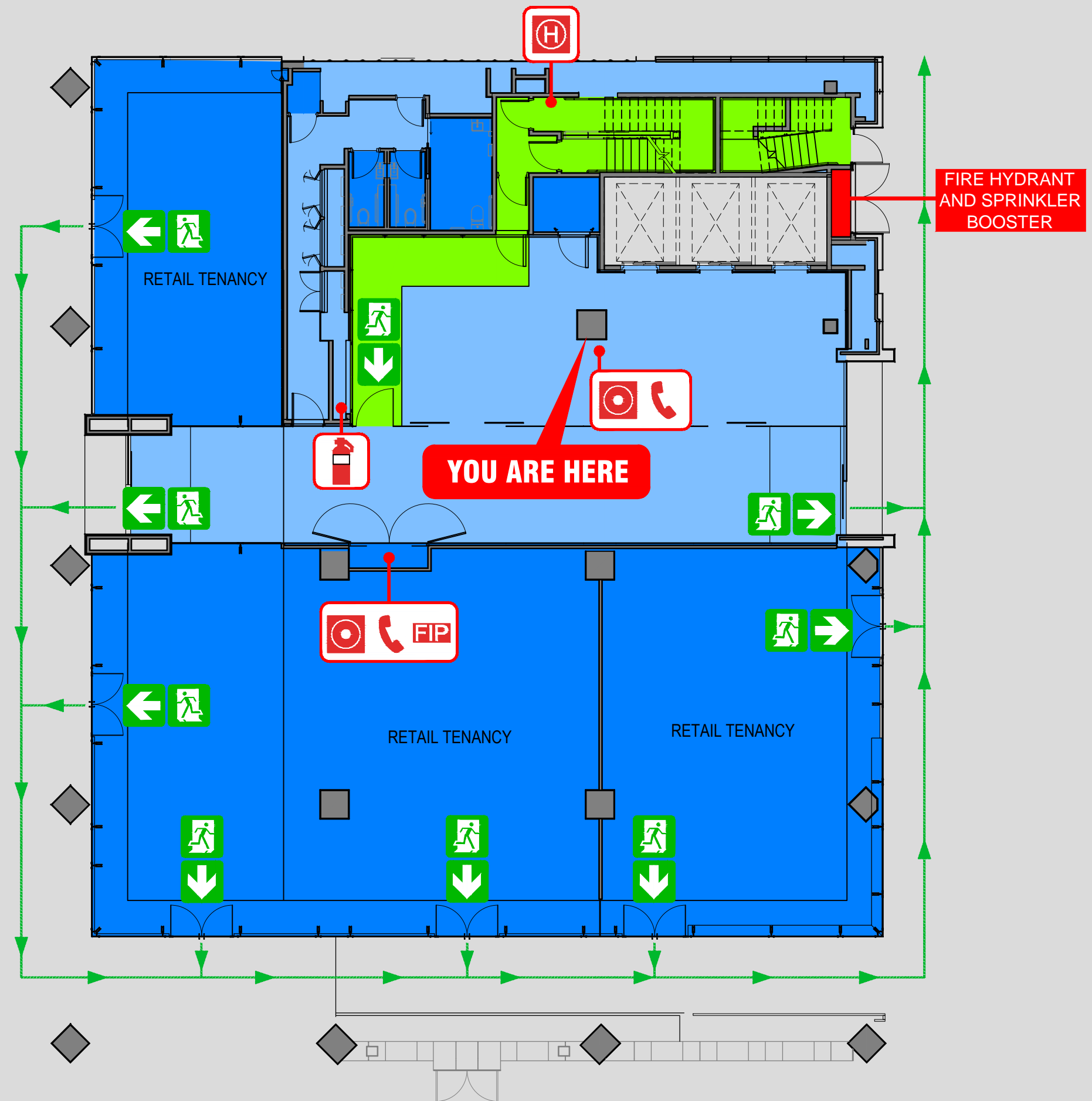
Assemble at Assembly Area 1:

On footpath along Cathedral Avenue

- If directed to move to Assembly Area 2, cross roads, watch the traffic and take care.
- Report any missing persons to the Fire Brigade or Warden.

DIAL - 000 EMERGENCY SERVICES

	Fire Hydrant		Fire Indicator Panel
	Dry Chemical Powder Extinguisher		Manual Call Point
	Fire Hose Reel		Warden Intercom Point
	Path of travel		Muster Location
	Emergency Exit		



EVACUATION DIAGRAM - MEZZANINE

565 HAY STREET
PERTH, 6000

EMERGENCY INFORMATION

ON HEARING THE ALERT TONE

(Beep.....Beep.....Beep...)

- Be aware that a possible emergency situation exists.
- Check for signs of fire and smoke in your area.
- Move to the emergency exit on your floor and await further instructions, otherwise, standby.

ON HEARING EVACUATION TONE

(Whoop, Whoop, Whoop)

- Cease all activities and move to the nearest safe exit.
- When directed, evacuate to the assembly area.
- Exit in single file on the hand rail side of stairs.
- No talking in the fire stairs other than the Fire Wardens instructions.
- No inappropriate items to be taken in stairs eg NO DRINKS.
- DO NOT USE LIFTS








ASSEMBLY AREA

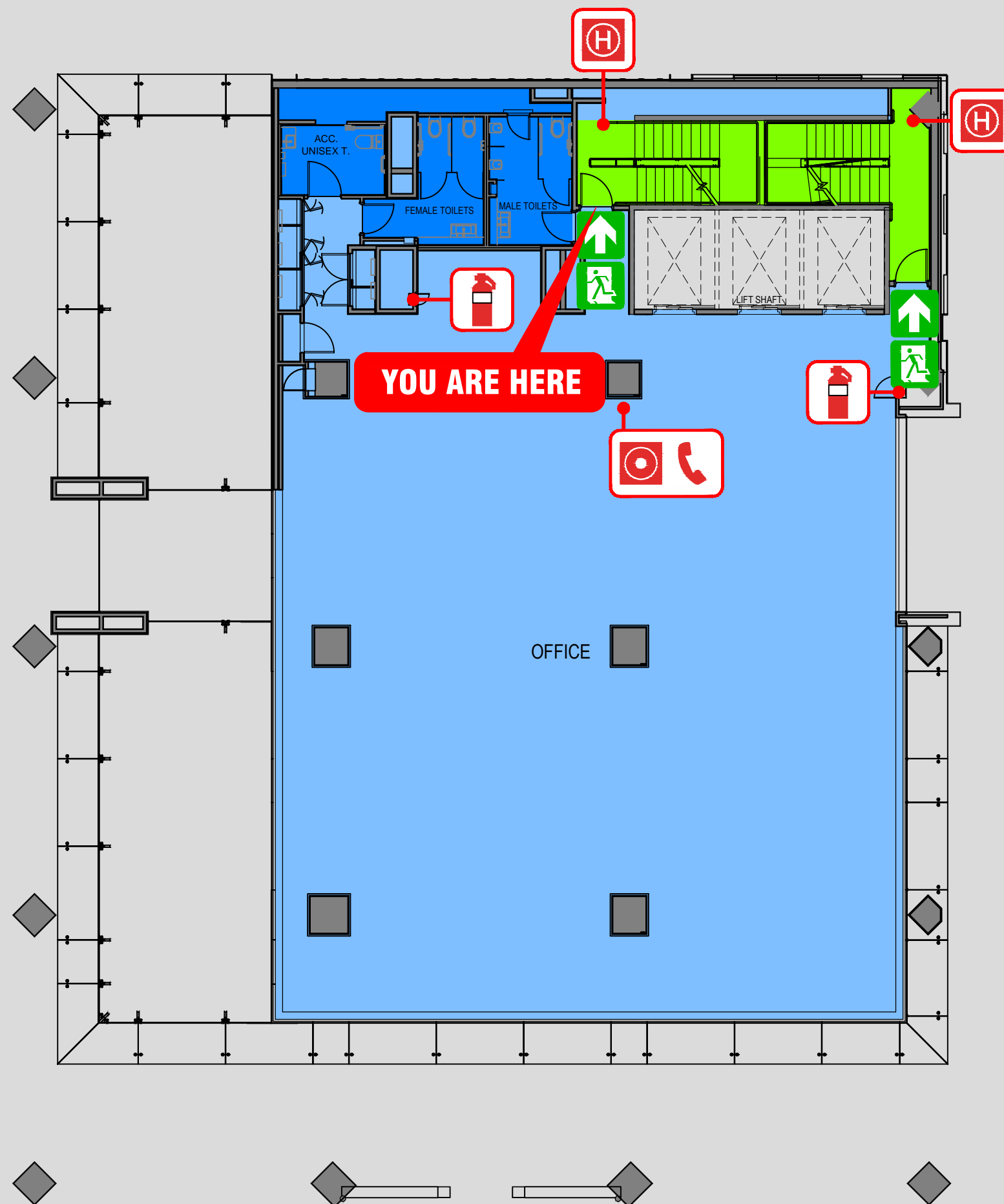
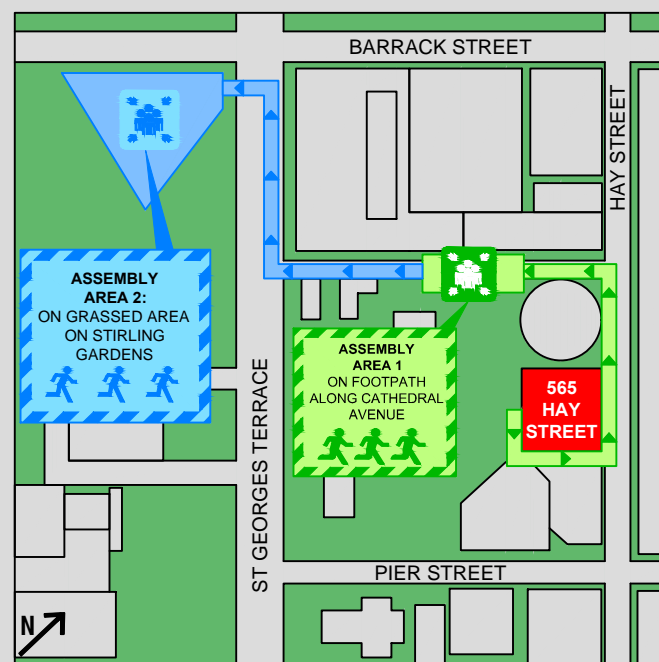
Assemble at Assembly Area 1:

On footpath along Cathedral Avenue

- If directed to move to Assembly Area 2, cross roads, watch the traffic and take care.
- Report any missing persons to the Fire Brigade or Warden.

DIAL - 000 EMERGENCY SERVICES

- | | |
|--|---|
|  Fire Hydrant |  Manual Call Point |
|  Dry Chemical Powder Extinguisher |  Warden Intercom Point |
|  Path of travel |  Muster Location |
|  Emergency Exit | |



EVACUATION DIAGRAM - LEVEL 1

565 HAY STREET
PERTH, 6000

EMERGENCY INFORMATION

ON HEARING THE ALERT TONE

(Beep.....Beep.....Beep...)

- Be aware that a possible emergency situation exists.
- Check for signs of fire and smoke in your area.
- Move to the emergency exit on your floor and await further instructions, otherwise, standby.

ON HEARING EVACUATION TONE

(Whoop, Whoop, Whoop)

- Cease all activities and move to the nearest safe exit.
- When directed, evacuate to the assembly area.
- Exit in single file on the hand rail side of stairs.
- No talking in the fire stairs other than the Fire Wardens instructions.
- No inappropriate items to be taken in stairs eg NO DRINKS.
- DO NOT USE LIFTS








ASSEMBLY AREA

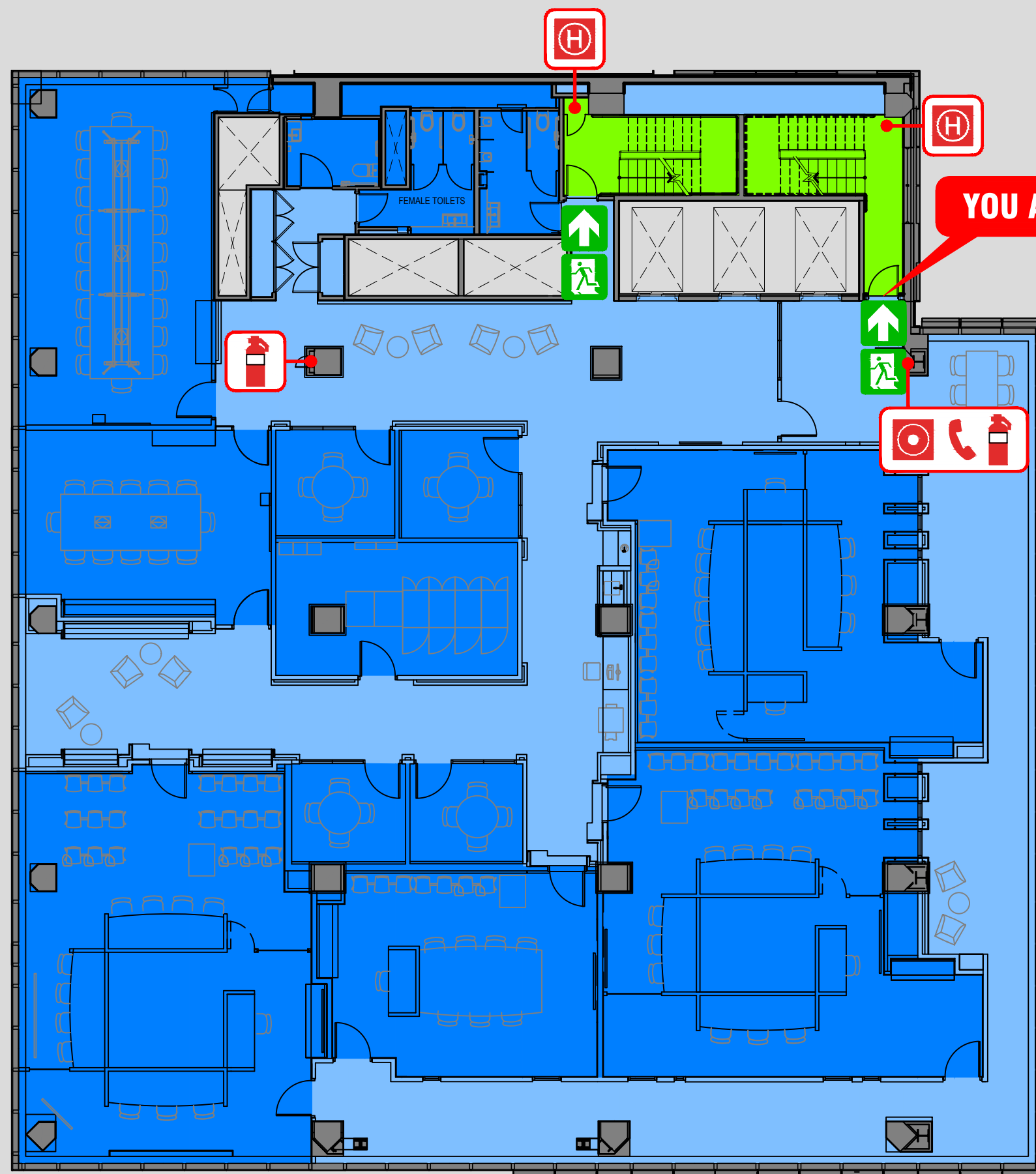
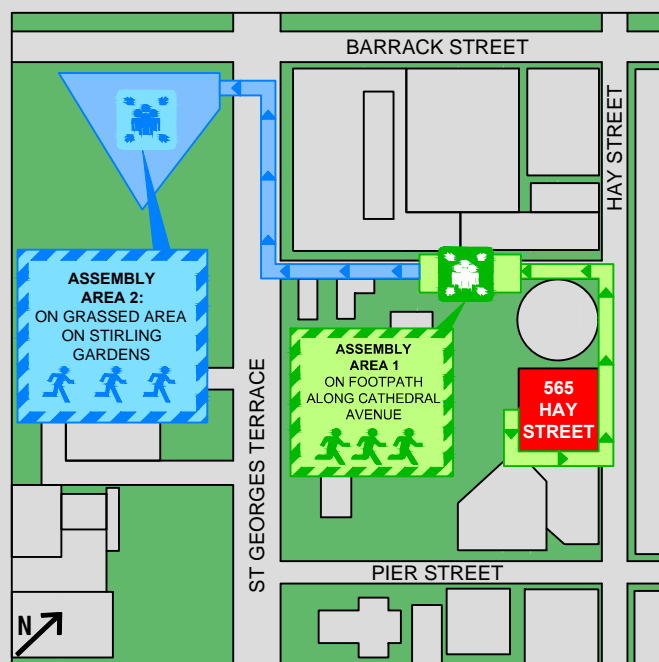
Assemble at Assembly Area 1:

On footpath along Cathedral Avenue

- If directed to move to Assembly Area 2, cross roads, watch the traffic and take care.
- Report any missing persons to the Fire Brigade or Warden.

DIAL - 000 EMERGENCY SERVICES

- | | |
|--|---|
|  Fire Hydrant |  Manual Call Point |
|  Dry Chemical Powder Extinguisher |  Warden Intercom Point |
|  Path of travel |  Muster Location |
|  Emergency Exit | |



EVACUATION DIAGRAM - LEVEL 2

565 HAY STREET
PERTH, 6000

EMERGENCY INFORMATION

ON HEARING THE ALERT TONE

(Beep.....Beep.....Beep...)

- Be aware that a possible emergency situation exists.
- Check for signs of fire and smoke in your area.
- Move to the emergency exit on your floor and await further instructions, otherwise, standby.

ON HEARING EVACUATION TONE

(Whoop, Whoop, Whoop)

- Cease all activities and move to the nearest safe exit.
- When directed, evacuate to the assembly area.
- Exit in single file on the hand rail side of stairs.
- No talking in the fire stairs other than the Fire Wardens instructions.
- No inappropriate items to be taken in stairs eg NO DRINKS.
- DO NOT USE LIFTS








ASSEMBLY AREA

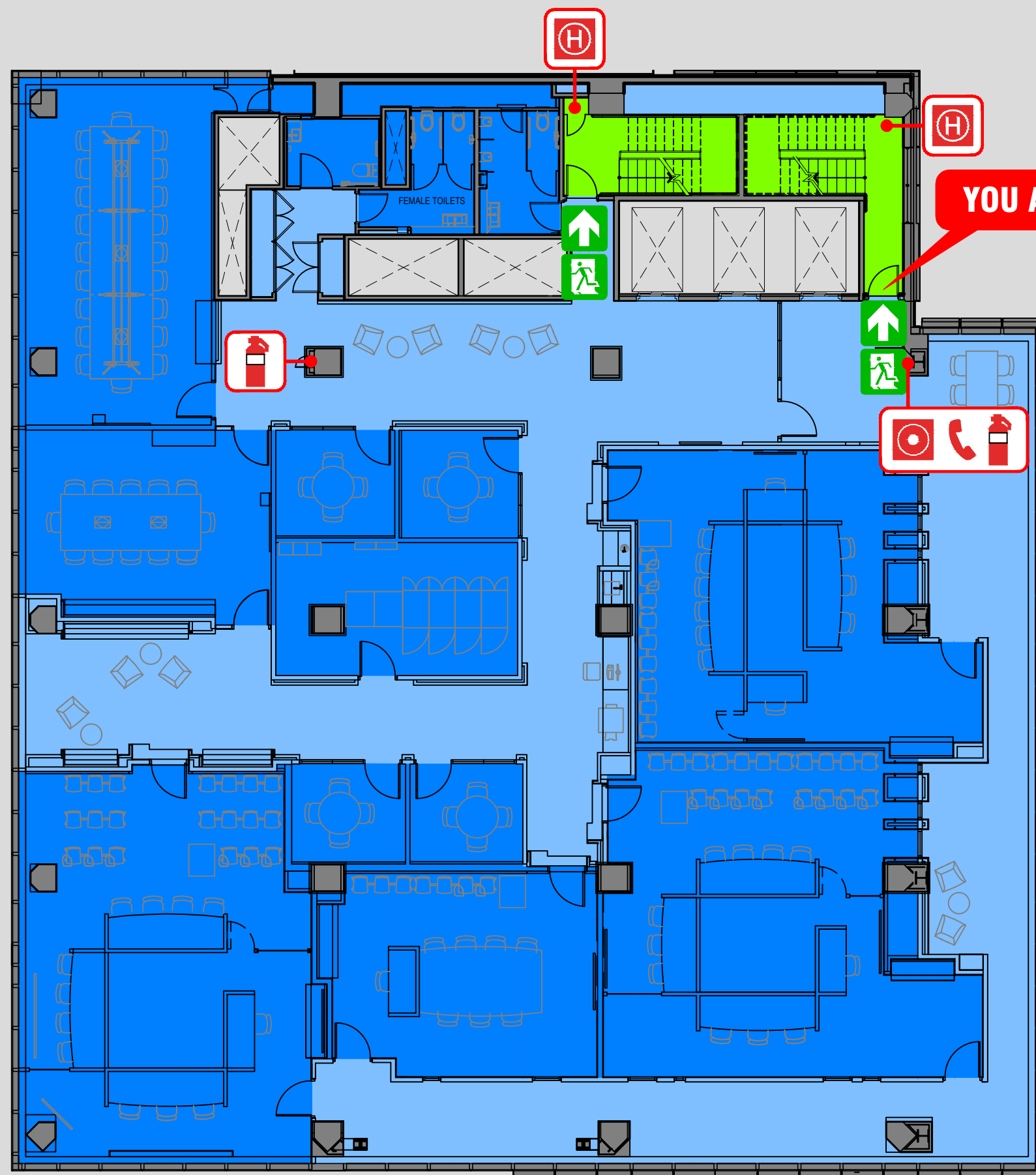
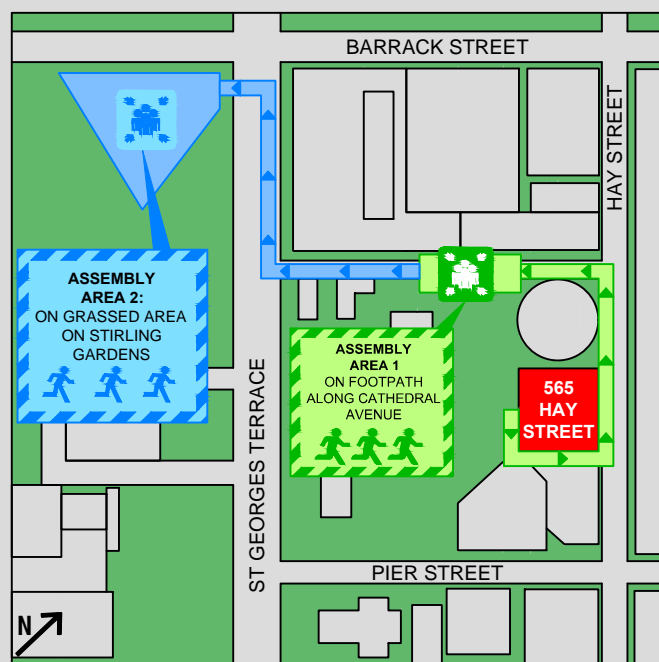
Assemble at Assembly Area 1:

On footpath along Cathedral Avenue

- If directed to move to Assembly Area 2, cross roads, watch the traffic and take care.
- Report any missing persons to the Fire Brigade or Warden.

DIAL - 000 EMERGENCY SERVICES

- | | |
|--|---|
|  Fire Hydrant |  Manual Call Point |
|  Dry Chemical Powder Extinguisher |  Warden Intercom Point |
|  Path of travel |  Muster Location |
|  Emergency Exit | |



EVACUATION DIAGRAM - LEVEL 3

565 HAY STREET
PERTH, 6000

EMERGENCY INFORMATION

ON HEARING THE ALERT TONE

(Beep.....Beep.....Beep...)

- Be aware that a possible emergency situation exists.
- Check for signs of fire and smoke in your area.
- Move to the emergency exit on your floor and await further instructions, otherwise, standby.

ON HEARING EVACUATION TONE

(Whoop, Whoop, Whoop)

- Cease all activities and move to the nearest safe exit.
- When directed, evacuate to the assembly area.
- Exit in single file on the hand rail side of stairs.
- No talking in the fire stairs other than the Fire Wardens instructions.
- No inappropriate items to be taken in stairs eg NO DRINKS.
- DO NOT USE LIFTS








ASSEMBLY AREA

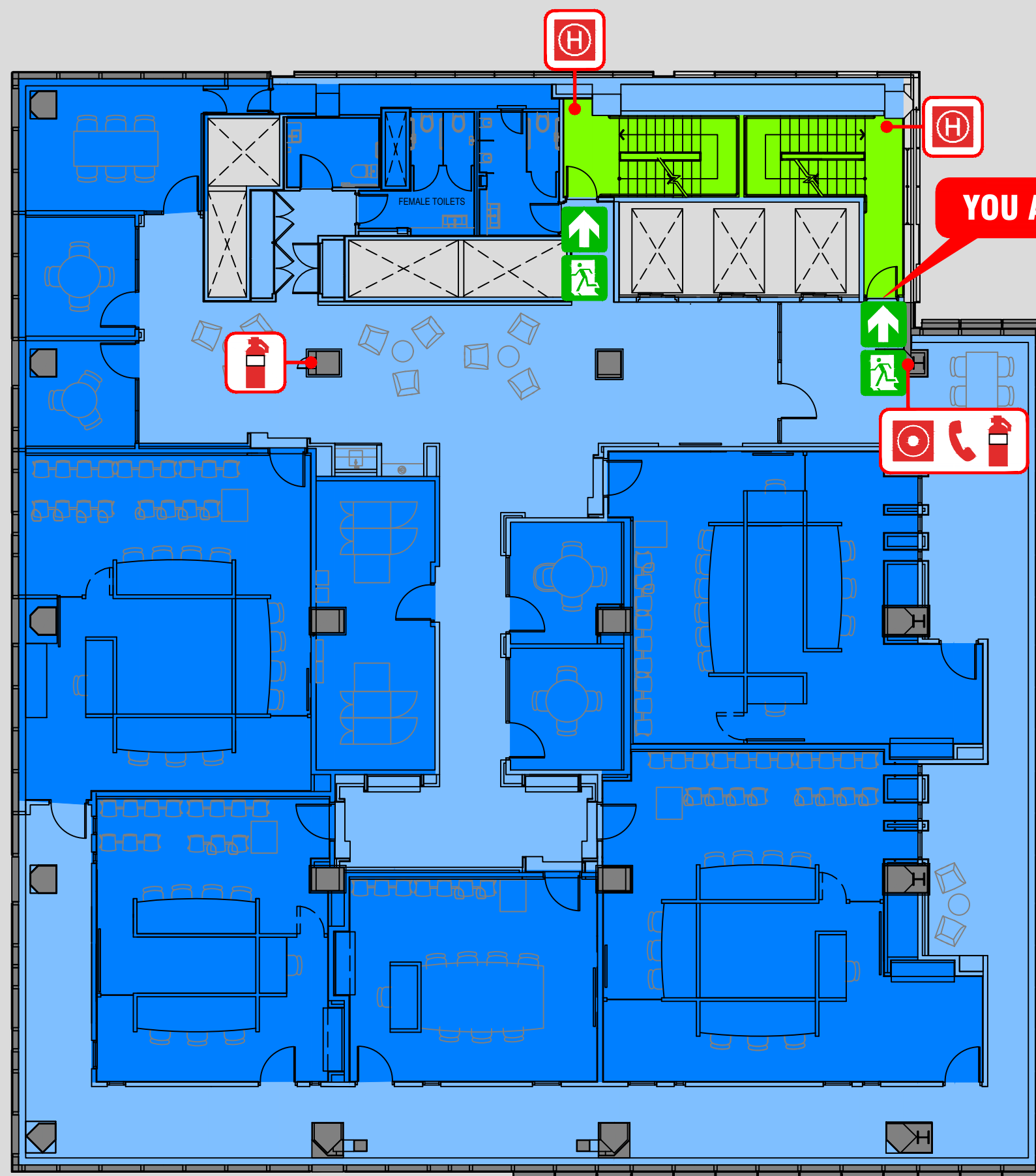
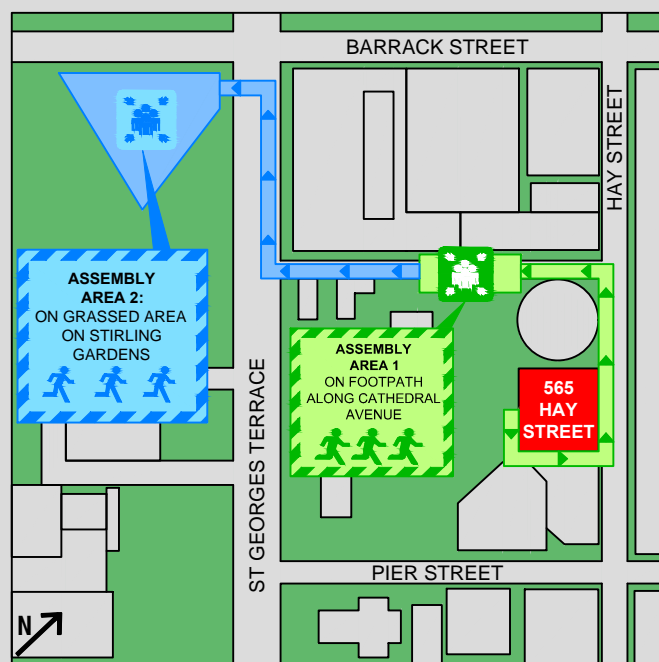
Assemble at Assembly Area 1:

On footpath along Cathedral Avenue

- If directed to move to Assembly Area 2, cross roads, watch the traffic and take care.
- Report any missing persons to the Fire Brigade or Warden.

DIAL - 000 EMERGENCY SERVICES

- | | |
|--|---|
|  Fire Hydrant |  Manual Call Point |
|  Dry Chemical Powder Extinguisher |  Warden Intercom Point |
|  Path of travel |  Muster Location |
|  Emergency Exit | |



EVACUATION DIAGRAM - LEVEL 4

565 HAY STREET
PERTH, 6000

EMERGENCY INFORMATION

ON HEARING THE ALERT TONE

(Beep.....Beep.....Beep...)

- Be aware that a possible emergency situation exists.
- Check for signs of fire and smoke in your area.
- Move to the emergency exit on your floor and await further instructions, otherwise, standby.

ON HEARING EVACUATION TONE

(Whoop, Whoop, Whoop)

- Cease all activities and move to the nearest safe exit.
- When directed, evacuate to the assembly area.
- Exit in single file on the hand rail side of stairs.
- No talking in the fire stairs other than the Fire Wardens instructions.
- No inappropriate items to be taken in stairs eg NO DRINKS.
- DO NOT USE LIFTS








ASSEMBLY AREA

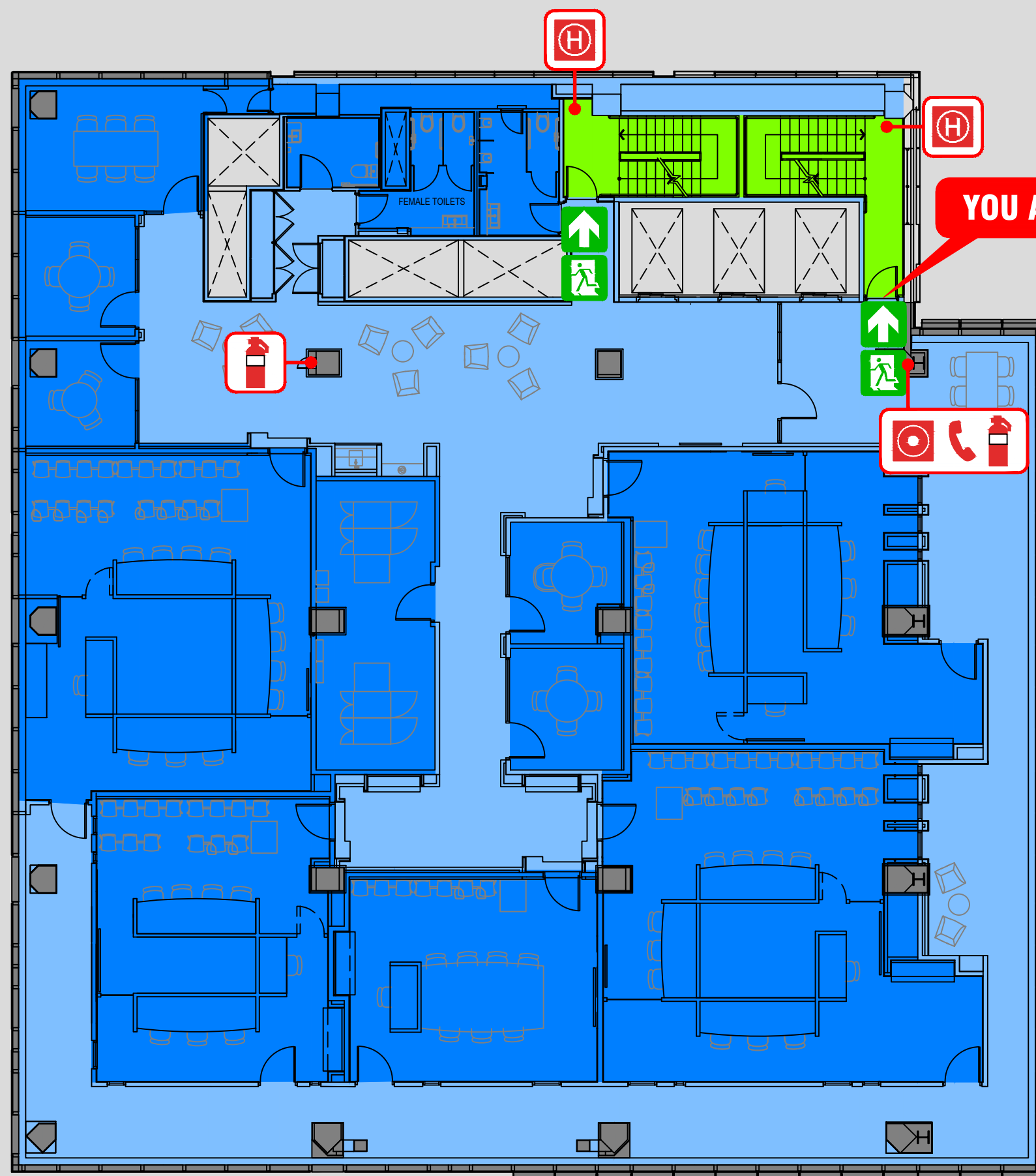
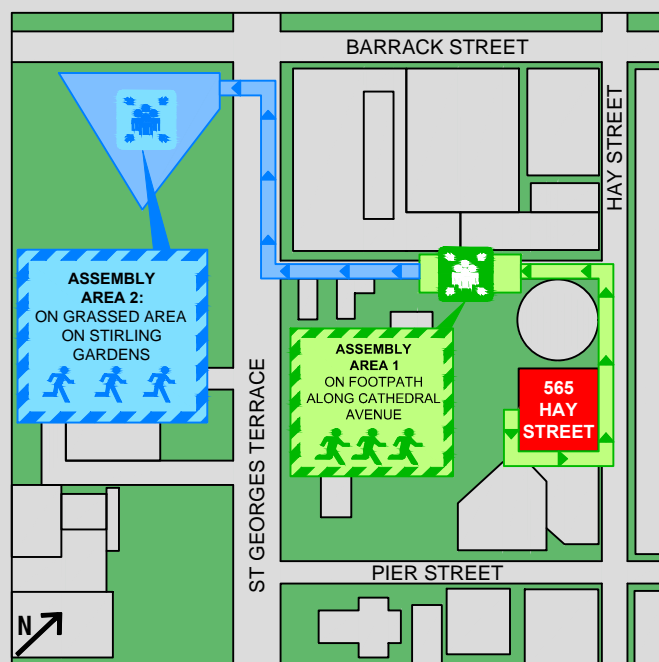
Assemble at Assembly Area 1:

On footpath along Cathedral Avenue

- If directed to move to Assembly Area 2, cross roads, watch the traffic and take care.
- Report any missing persons to the Fire Brigade or Warden.

DIAL - 000 EMERGENCY SERVICES

-  Fire Hydrant
-  Manual Call Point
-  Dry Chemical Powder Extinguisher
-  Warden Intercom Point
-  Path of travel
-  Muster Location
-  Emergency Exit



EVACUATION DIAGRAM - LEVEL 6

565 HAY STREET
PERTH, 6000

EMERGENCY INFORMATION

ON HEARING THE ALERT TONE

(Beep.....Beep.....Beep...)

- Be aware that a possible emergency situation exists.
- Check for signs of fire and smoke in your area.
- Move to the emergency exit on your floor and await further instructions, otherwise, standby.

ON HEARING EVACUATION TONE

(Whoop, Whoop, Whoop)

- Cease all activities and move to the nearest safe exit.
- When directed, evacuate to the assembly area.
- Exit in single file on the hand rail side of stairs.
- No talking in the fire stairs other than the Fire Wardens instructions.
- No inappropriate items to be taken in stairs eg NO DRINKS.
- DO NOT USE LIFTS








ASSEMBLY AREA

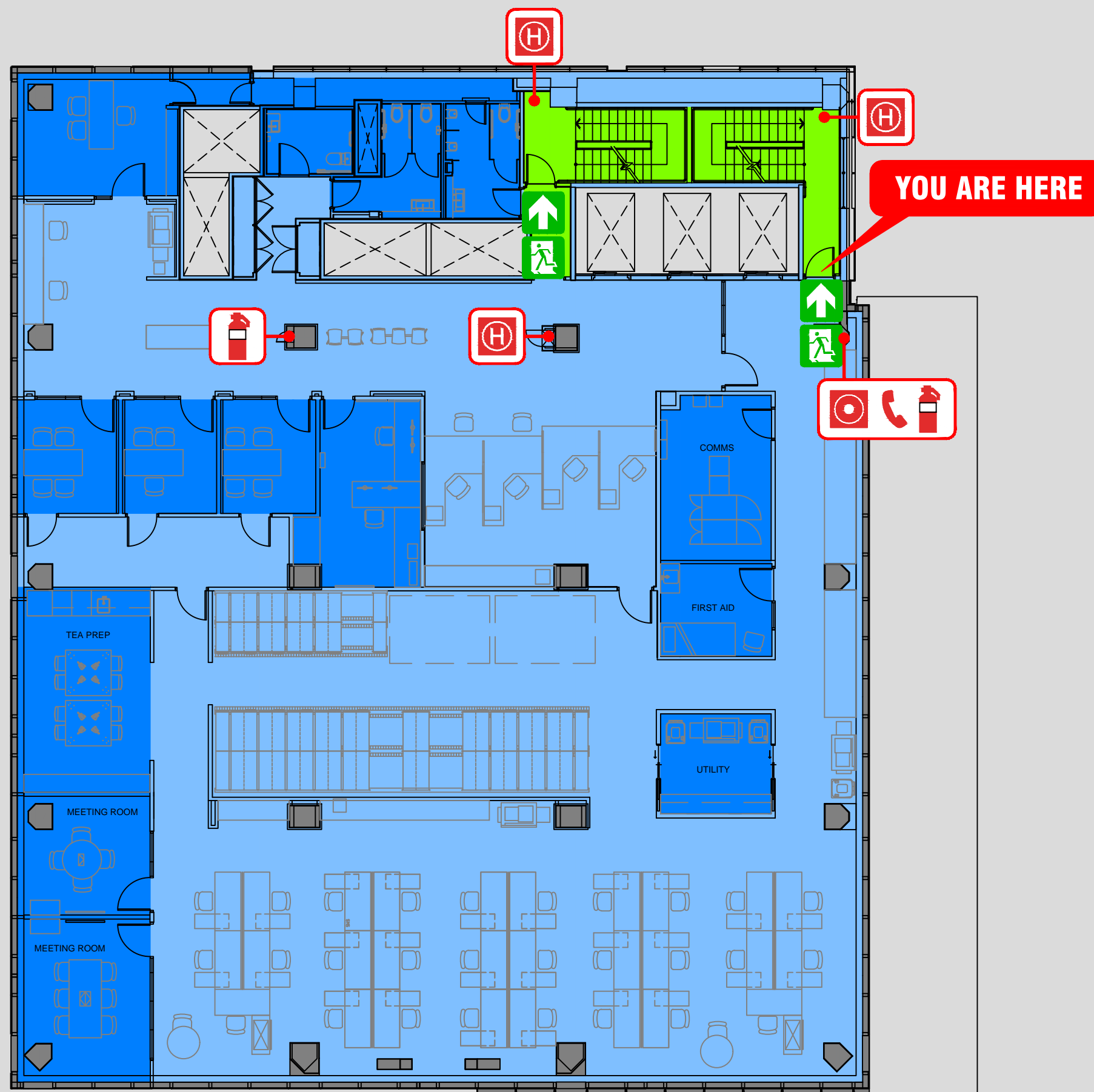
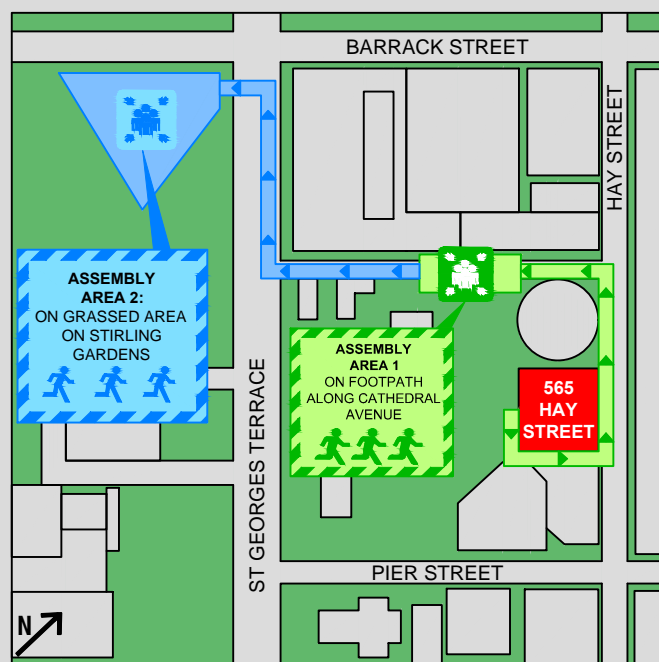
Assemble at Assembly Area 1:

On footpath along Cathedral Avenue

- If directed to move to Assembly Area 2, cross roads, watch the traffic and take care.
- Report any missing persons to the Fire Brigade or Warden.

DIAL - 000 EMERGENCY SERVICES

-  Fire Hydrant
-  Manual Call Point
-  Dry Chemical Powder Extinguisher
-  Warden Intercom Point
-  Path of travel
-  Muster Location
-  Emergency Exit



EVACUATION DIAGRAM - LEVEL 6

565 HAY STREET
PERTH, 6000

EMERGENCY INFORMATION

ON HEARING THE ALERT TONE

(Beep.....Beep.....Beep...)

- Be aware that a possible emergency situation exists.
- Check for signs of fire and smoke in your area.
- Move to the emergency exit on your floor and await further instructions, otherwise, standby.

ON HEARING EVACUATION TONE

(Whoop, Whoop, Whoop)

- Cease all activities and move to the nearest safe exit.
- When directed, evacuate to the assembly area.
- Exit in single file on the hand rail side of stairs.
- No talking in the fire stairs other than the Fire Wardens instructions.
- No inappropriate items to be taken in stairs eg NO DRINKS.
- DO NOT USE LIFTS

ASSEMBLY AREA

Assemble at Assembly Area 1:

On footpath along Cathedral Avenue

- If directed to move to Assembly Area 2, cross roads, watch the traffic and take care.
- Report any missing persons to the Fire Brigade or Warden.

DIAL - 000 EMERGENCY SERVICES



Dry Chemical
Powder Extinguisher



Fire Hydrant



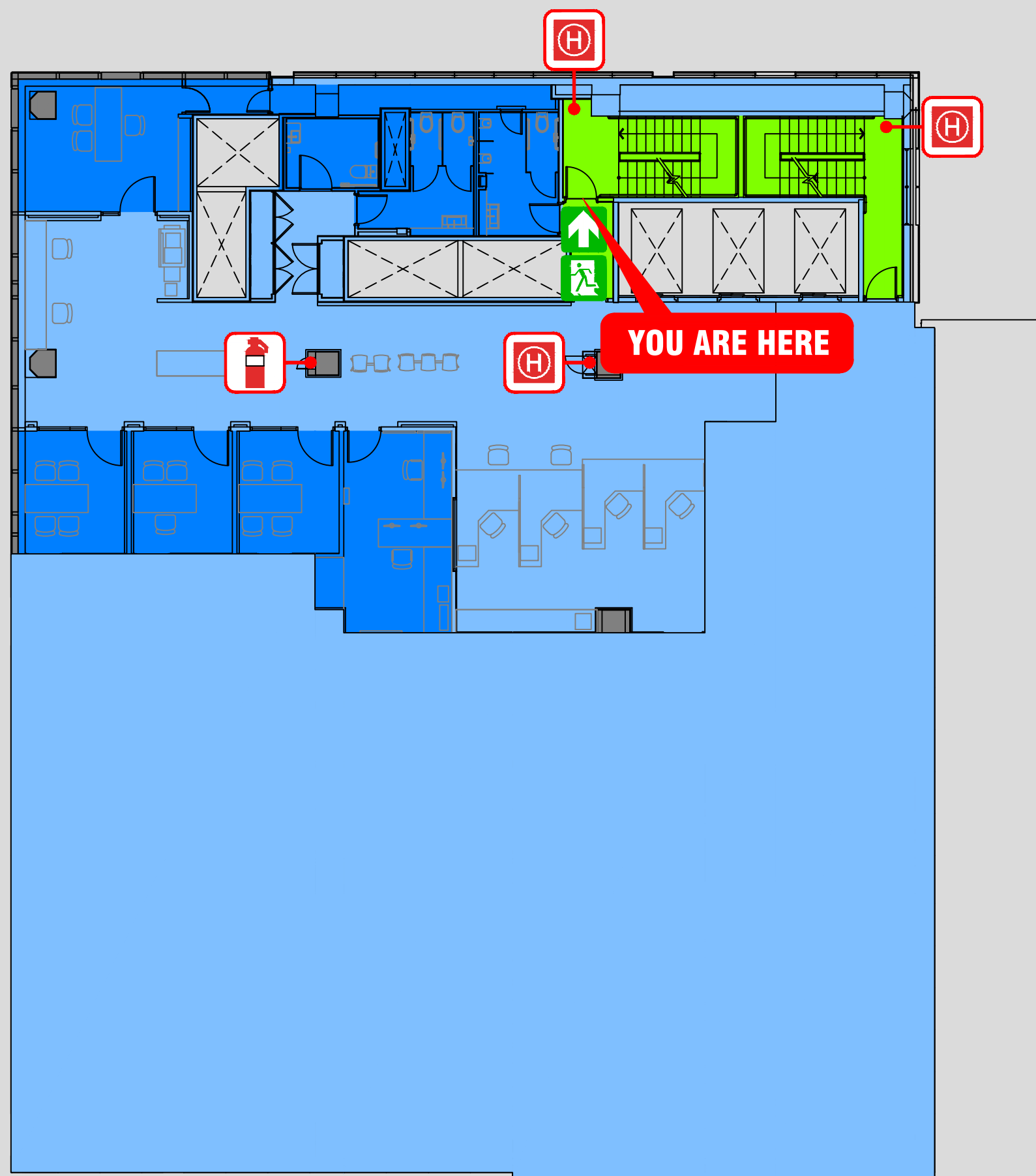
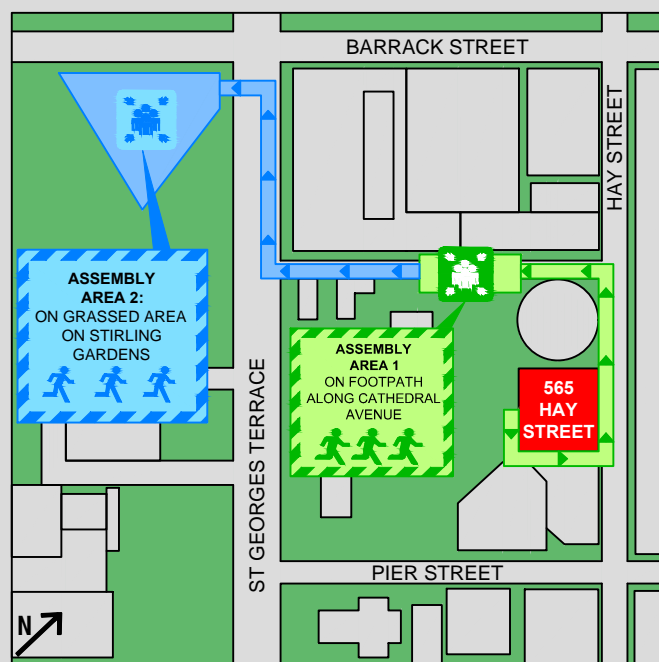
Path of travel



Muster Location



Emergency Exit



EVACUATION DIAGRAM - LEVEL 7

565 HAY STREET
PERTH, 6000

EMERGENCY INFORMATION

ON HEARING THE ALERT TONE

(Beep.....Beep.....Beep...)

- Be aware that a possible emergency situation exists.
- Check for signs of fire and smoke in your area.
- Move to the emergency exit on your floor and await further instructions, otherwise, standby.

ON HEARING EVACUATION TONE

(Whoop, Whoop, Whoop)

- Cease all activities and move to the nearest safe exit.
- When directed, evacuate to the assembly area.
- Exit in single file on the hand rail side of stairs.
- No talking in the fire stairs other than the Fire Wardens instructions.
- No inappropriate items to be taken in stairs eg NO DRINKS.
- DO NOT USE LIFTS








ASSEMBLY AREA

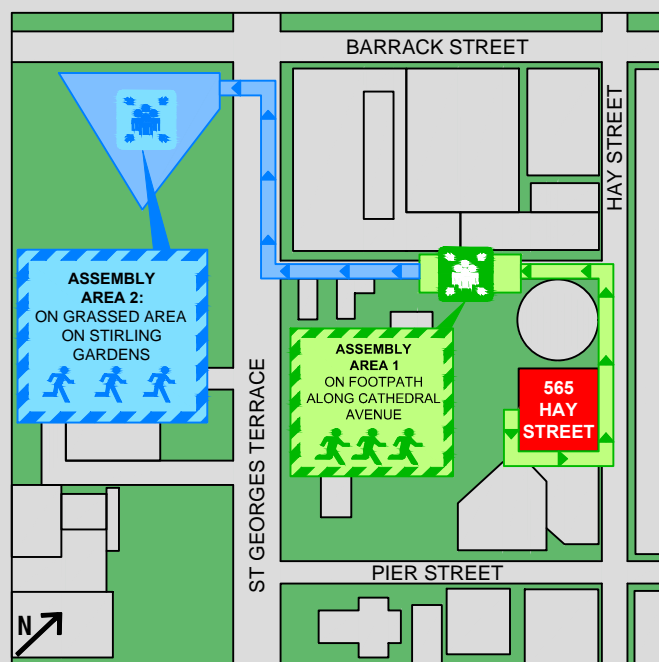
Assemble at Assembly Area 1:

On footpath along Cathedral Avenue

- If directed to move to Assembly Area 2, cross roads, watch the traffic and take care.
- Report any missing persons to the Fire Brigade or Warden.

DIAL - 000 EMERGENCY SERVICES

-  Fire Hydrant
-  Manual Call Point
-  Dry Chemical Powder Extinguisher
-  Warden Intercom Point
-  Path of travel
-  Muster Location
-  Emergency Exit



EVACUATION DIAGRAM - LEVEL 8

565 HAY STREET
PERTH, 6000

EMERGENCY INFORMATION

ON HEARING THE ALERT TONE

(Beep.....Beep.....Beep...)

- Be aware that a possible emergency situation exists.
- Check for signs of fire and smoke in your area.
- Move to the emergency exit on your floor and await further instructions, otherwise, standby.

ON HEARING EVACUATION TONE

(Whoop, Whoop, Whoop)

- Cease all activities and move to the nearest safe exit.
- When directed, evacuate to the assembly area.
- Exit in single file on the hand rail side of stairs.
- No talking in the fire stairs other than the Fire Wardens instructions.
- No inappropriate items to be taken in stairs eg NO DRINKS.
- DO NOT USE LIFTS








ASSEMBLY AREA

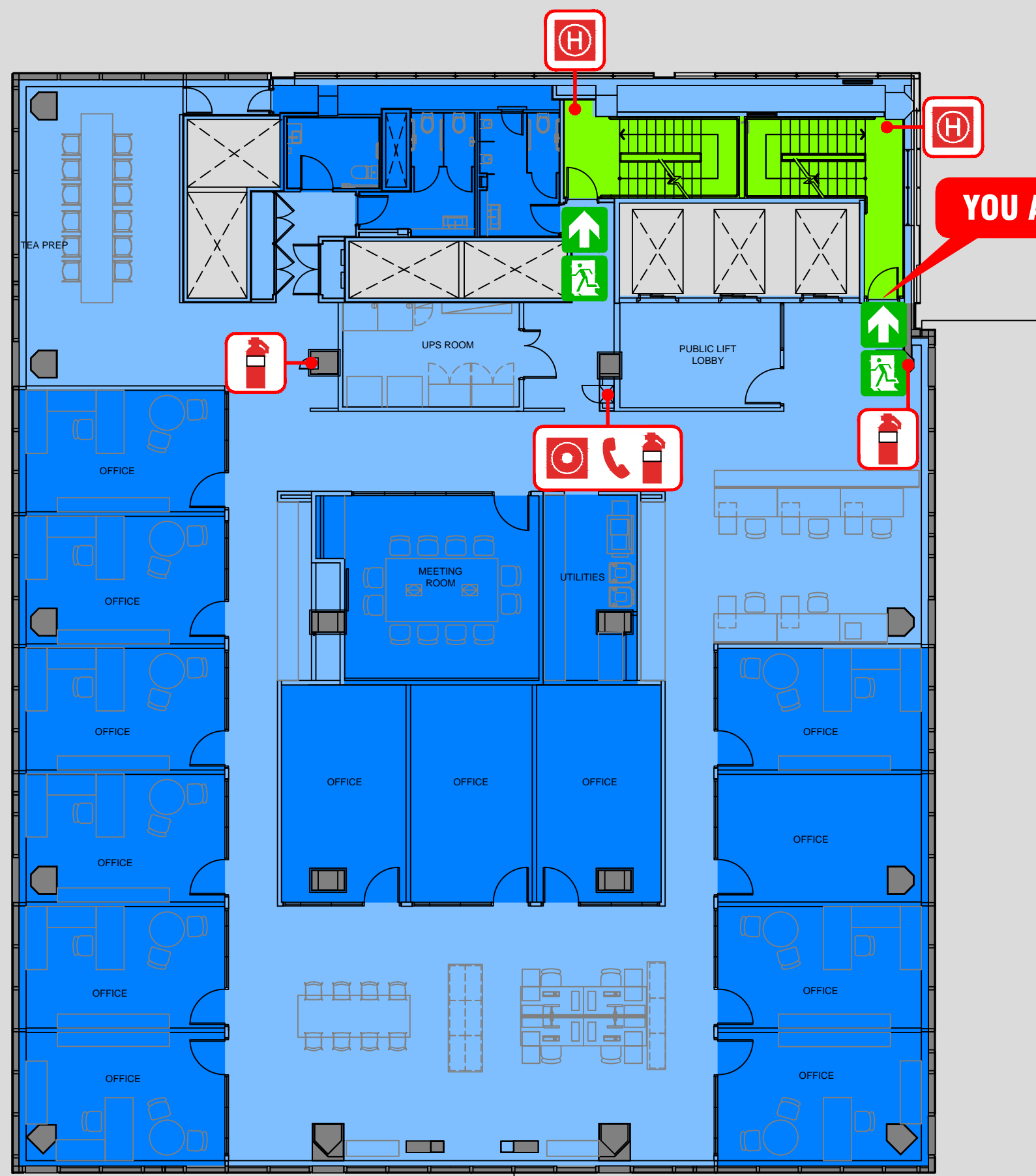
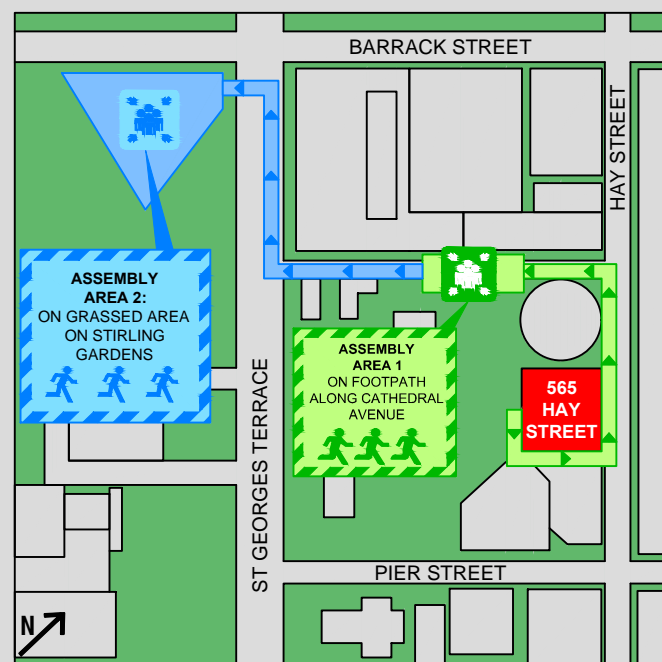
Assemble at Assembly Area 1:

On footpath along Cathedral Avenue

- If directed to move to Assembly Area 2, cross roads, watch the traffic and take care.
- Report any missing persons to the Fire Brigade or Warden.

DIAL - 000 EMERGENCY SERVICES

- | | |
|--|---|
|  Fire Hydrant |  Manual Call Point |
|  Dry Chemical Powder Extinguisher |  Warden Intercom Point |
|  Path of travel |  Muster Location |
|  Emergency Exit | |



EVACUATION DIAGRAM - LEVEL 9

565 HAY STREET
PERTH, 6000

EMERGENCY INFORMATION

ON HEARING THE ALERT TONE

(Beep.....Beep.....Beep...)

- Be aware that a possible emergency situation exists.
- Check for signs of fire and smoke in your area.
- Move to the emergency exit on your floor and await further instructions, otherwise, standby.

ON HEARING EVACUATION TONE

(Whoop, Whoop, Whoop)

- Cease all activities and move to the nearest safe exit.
- When directed, evacuate to the assembly area.
- Exit in single file on the hand rail side of stairs.
- No talking in the fire stairs other than the Fire Wardens instructions.
- No inappropriate items to be taken in stairs eg NO DRINKS.
- DO NOT USE LIFTS









ASSEMBLY AREA

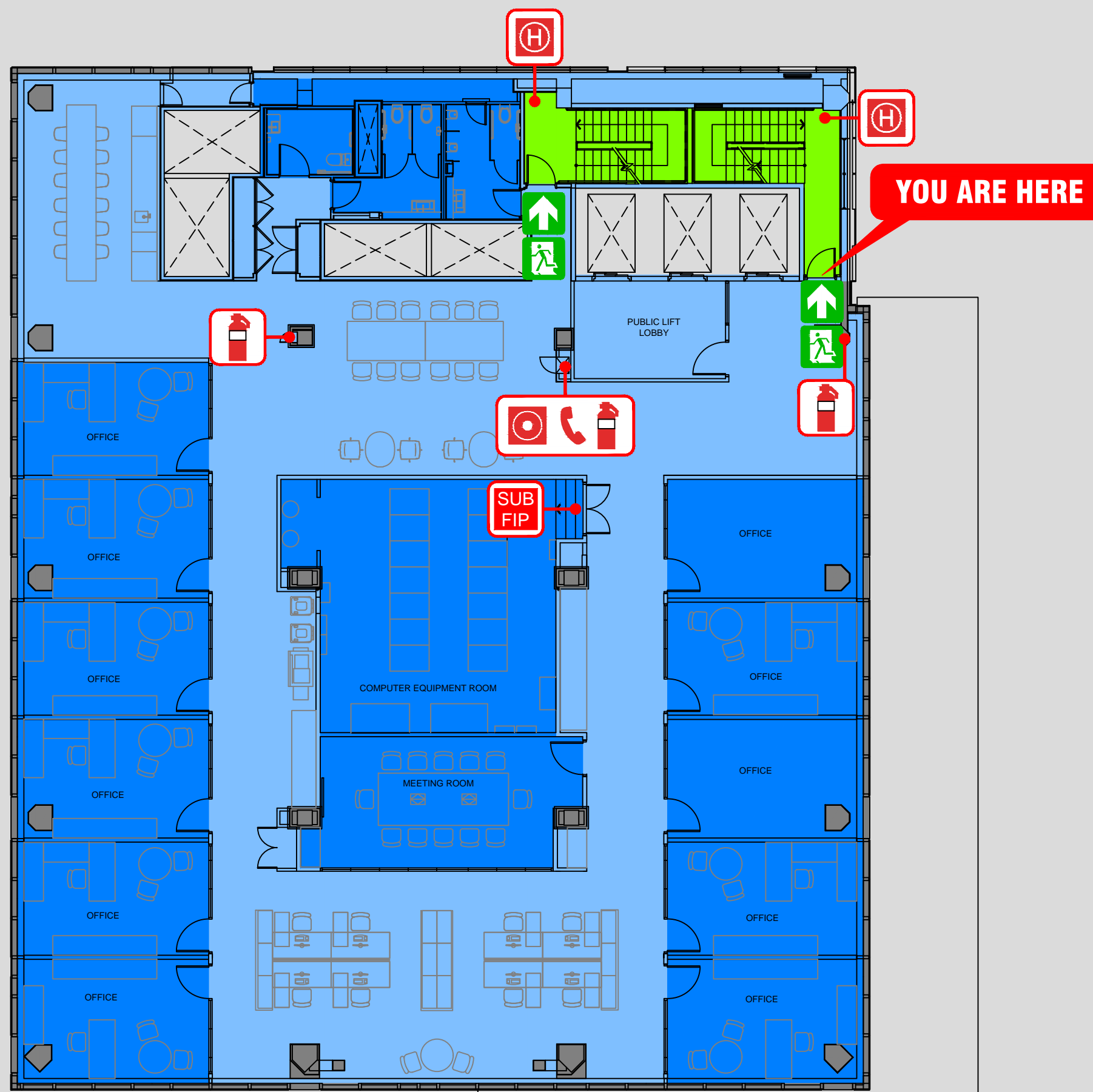
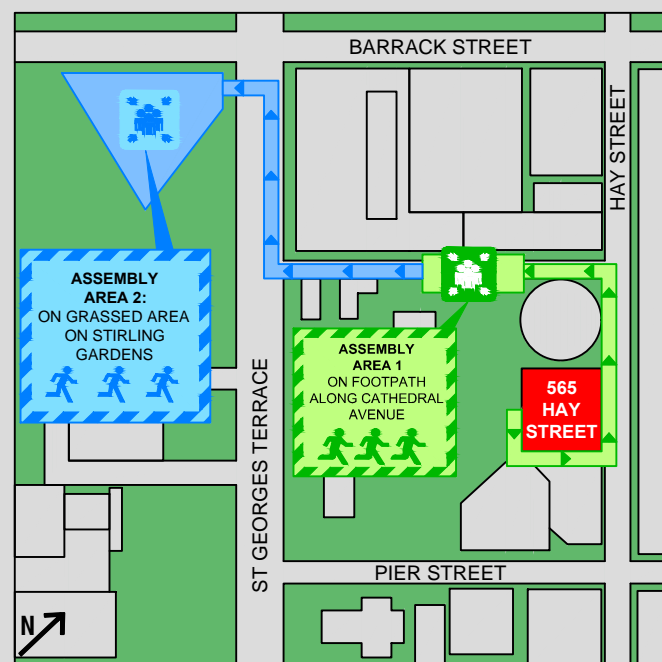
Assemble at Assembly Area 1:

On footpath along Cathedral Avenue

- If directed to move to Assembly Area 2, cross roads, watch the traffic and take care.
- Report any missing persons to the Fire Brigade or Warden.

DIAL - 000 EMERGENCY SERVICES

- | | |
|--|--|
|  Fire Hydrant |  Manual Call Point |
|  Dry Chemical Powder Extinguisher |  Warden Intercom Point |
|  Path of travel |  SUB Fire Indicator Panel |
|  Emergency Exit |  Muster Location |



EVACUATION DIAGRAM - LEVEL 10

565 HAY STREET
PERTH, 6000

EMERGENCY INFORMATION

ON HEARING THE ALERT TONE

(Beep.....Beep.....Beep...)

- Be aware that a possible emergency situation exists.
- Check for signs of fire and smoke in your area.
- Move to the emergency exit on your floor and await further instructions, otherwise, standby.

ON HEARING EVACUATION TONE

(Whoop, Whoop, Whoop)

- Cease all activities and move to the nearest safe exit.
- When directed, evacuate to the assembly area.
- Exit in single file on the hand rail side of stairs.
- No talking in the fire stairs other than the Fire Wardens instructions.
- No inappropriate items to be taken in stairs eg NO DRINKS.
- DO NOT USE LIFTS








ASSEMBLY AREA

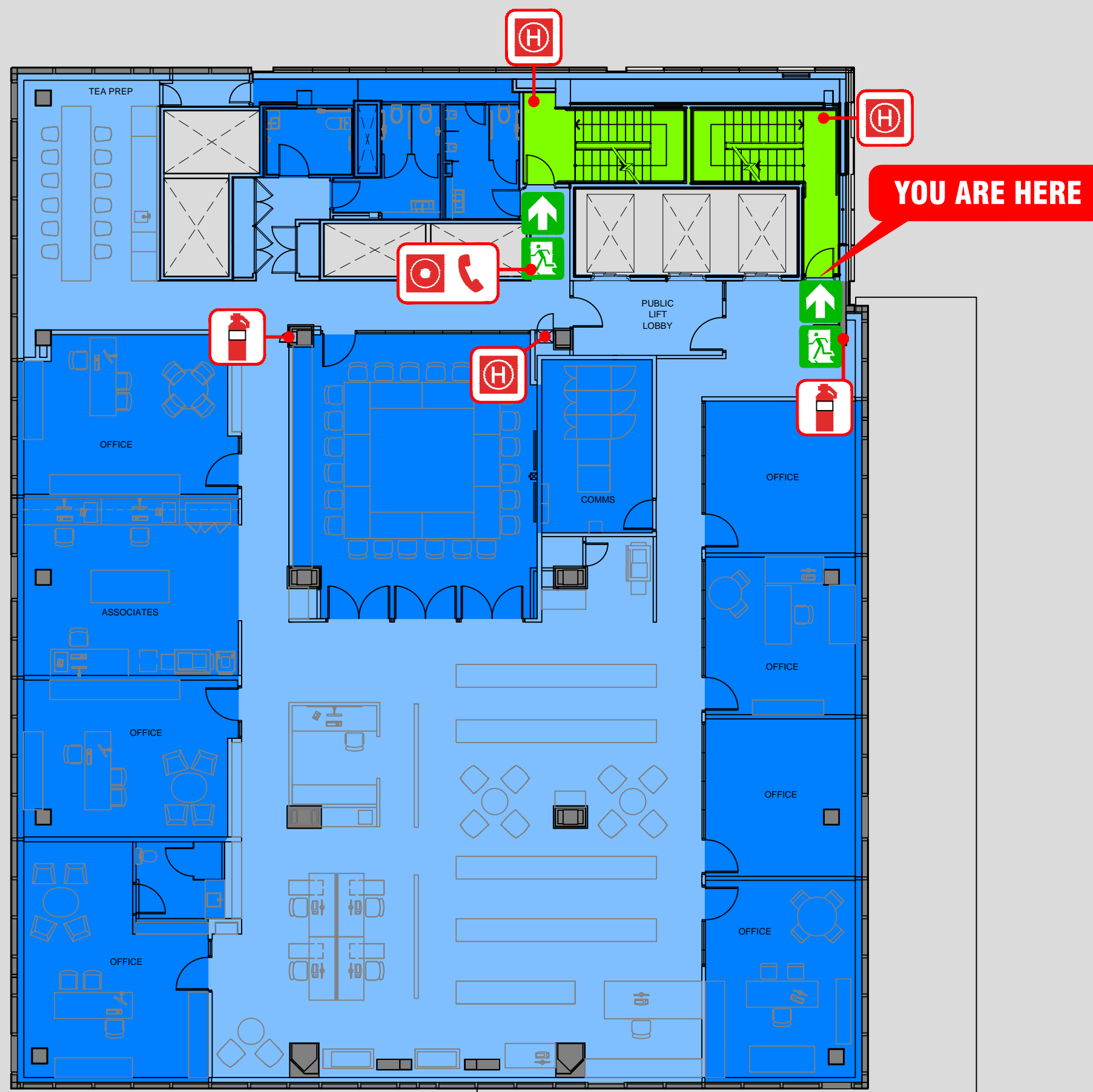
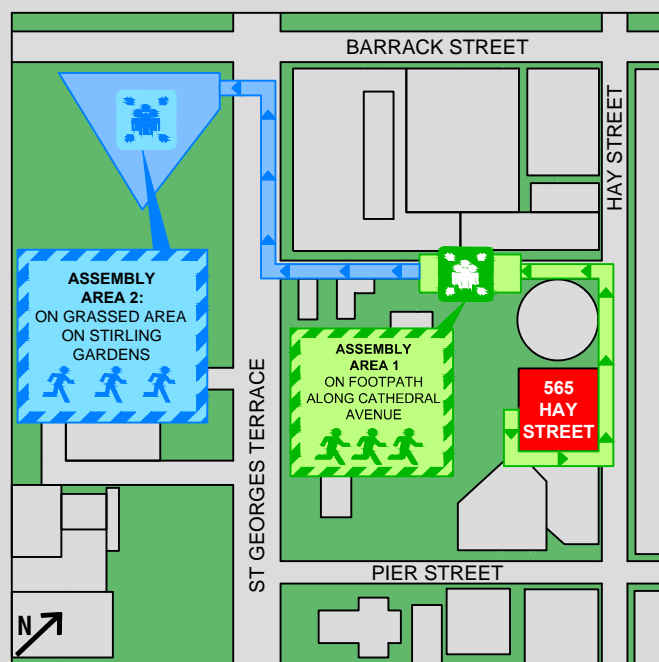
Assemble at Assembly Area 1:

On footpath along Cathedral Avenue

- If directed to move to Assembly Area 2, cross roads, watch the traffic and take care.
- Report any missing persons to the Fire Brigade or Warden.

DIAL - 000 EMERGENCY SERVICES

- | | |
|--|---|
|  Fire Hydrant |  Manual Call Point |
|  Dry Chemical Powder Extinguisher |  Warden Intercom Point |
|  Path of travel |  Muster Location |
|  Emergency Exit | |



EVACUATION DIAGRAM - LEVEL 11

565 HAY STREET
PERTH, 6000

EMERGENCY INFORMATION

ON HEARING THE ALERT TONE

(Beep.....Beep.....Beep...)

- Be aware that a possible emergency situation exists.
- Check for signs of fire and smoke in your area.
- Move to the emergency exit on your floor and await further instructions, otherwise, standby.

ON HEARING EVACUATION TONE

(Whoop, Whoop, Whoop)

- Cease all activities and move to the nearest safe exit.
- When directed, evacuate to the assembly area.
- Exit in single file on the hand rail side of stairs.
- No talking in the fire stairs other than the Fire Wardens instructions.
- No inappropriate items to be taken in stairs eg NO DRINKS.
- DO NOT USE LIFTS








ASSEMBLY AREA

Assemble at Assembly Area 1:

On footpath along Cathedral Avenue

- If directed to move to Assembly Area 2, cross roads, watch the traffic and take care.
- Report any missing persons to the Fire Brigade or Warden.

DIAL - 000 EMERGENCY SERVICES

-  Fire Hydrant
-  Manual Call Point
-  Dry Chemical Powder Extinguisher
-  Warden Intercom Point
-  Path of travel
-  Muster Location
-  Emergency Exit

